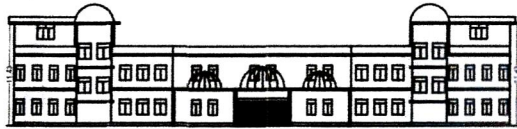
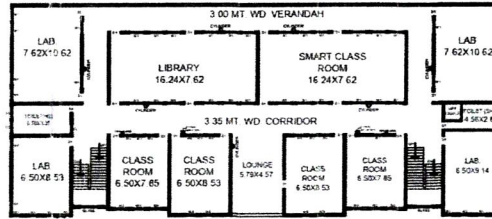


SECTION AT AB



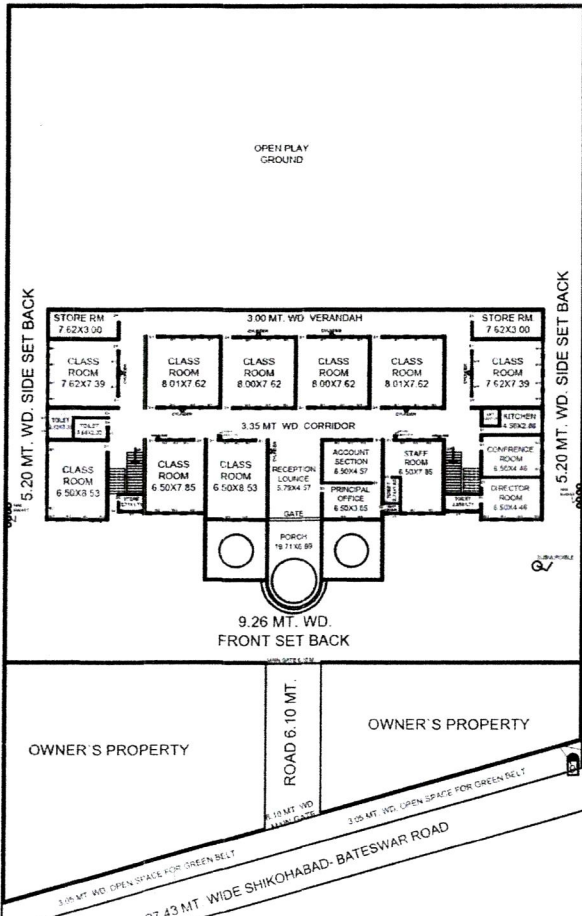
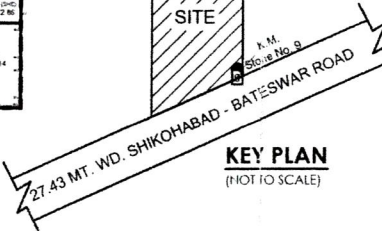
FRONT ELEVATION



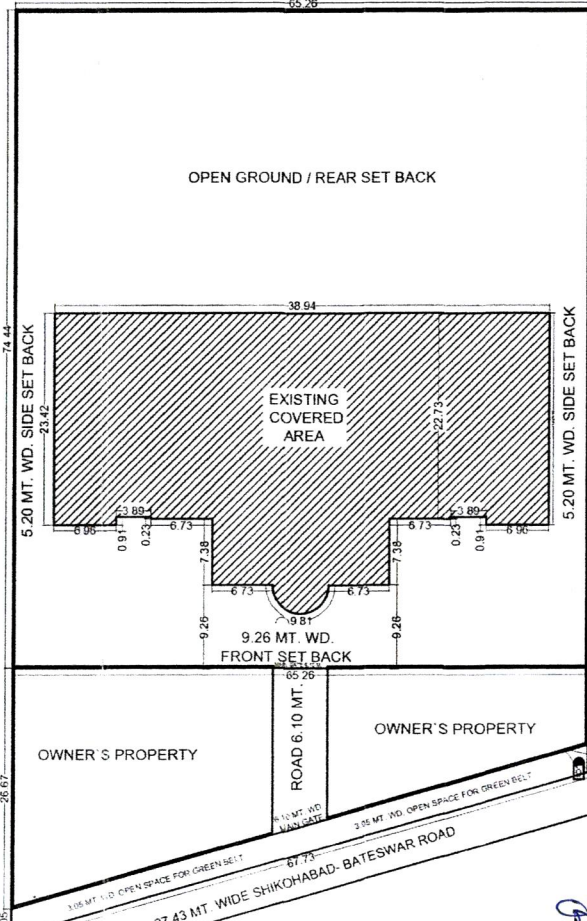
FIRST FLOOR PLAN



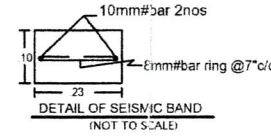
KEY PLAN (NOT TO SCALE)



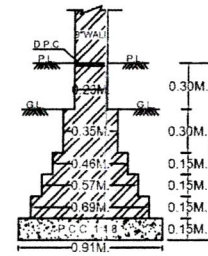
GROUND FLOOR PLAN



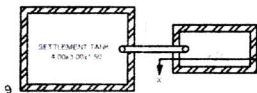
SITE PLAN



DETAIL OF SEISMIC BAND (NOT TO SCALE)



FOUNDATION DETAIL (NOT TO SCALE)



RAIN WATER HARVESTING (NOT TO SCALE)

SPACE FOR OFFICE USE

EXTINGUISH FIRE LEGEND

- OVER HEAD WATER TANK ON TERRACE 20 000 LT (2500 LITS STAFF QUARTER - 10000 LITS FOR MESS-SCHOOL CLOCK)
- FIRE CYLINDER (as per is 2180, 10 CO₂ TYPE, 40 ABC TYPE 6 KG.)
- SUBMURSIBLE
- FIRE BUCKET
- FIRE ALARM (10 elevation library & store)
- HOSE REEL (For All Block) 15 NOS
- LANDING VALVE DAWN COMER 100 MEDIA 15 NOS
- FIRE PUMP (800 LMP) 3/1 NOS
- SPEAKER WITH BEACON/TALKBACK WITH BEACON
- FIRE HYDRANT (For Each Block) 6 NOS

TOTAL BUILDING HEIGHT= 3.66M.
 STAIR DETAIL= WIDTH - 1.83M.
 RISER - 0.15M.
 TREAD- 0.30M.

AREA CHART :	SQMT.
TOTAL PLOT AREA	4858.00
GROUND FLOOR COVERED AREA	1410.57
GROUND FLOOR OPEN AREA	3447.43
FIRST FLOOR COVERED AREA	1268.65
TOTAL COVERED AREA	2679.22
% GROUND FLOOR COVERAGE	29.04
F.A.R.	0.29

REFERENCE

EXISTING CONS.
 DRAIN S/SEWER

SCHEDULE OF OPENINGS :

MAIN GATE	= 6.10 X 1.65
GATE	= 5.79 X 1.83
D1 DOOR	= 1.07 X 2.59
D2 DOOR	= 0.76 X 2.59
W1 WINDOW	= 1.83 X 1.68
W2 WINDOW	= 1.83 X 1.68
W3 WINDOW	= 1.83 X 1.68
V1 VENTILATOR	= 0.76 X 0.45

JOB TITLE:

EXISTING BUILDING PLAN OF 'ST. R.C.S. ACADEMY' SITUATED AT SHIKOHABAD BATESWAR ROAD, (KM. STONE NO.-9) SYARMAU RAMLAL, DISTT.- FIROZABAD (U.P.)

MANAGER / DIRECTOR

SIGNATURES:

OWNER'S SIGNATURE _____ ARCHITECT'S SIGNATURE *Er. Shiv Charan Singh*
 D.C.E. B-Tech (Civ)
 R. No. 39/F G.D.A
 Near Nagar Palika, Shikohabad
 Ph. No. 911107549

SHEET TITLE :

SUBMISSION DRAWING

DRG. NO.	3	MANAGER/SECRETARY ST. R.C.S. ACADEMY	ARCHITECT
SCALE	1:500 & 1:10	Er. SHIV CHARAN SINGH	

Shiv Charan Singh
 MANAGER/SECRETARY
 ST. R.C.S. ACADEMY
 SHIKOHABAD